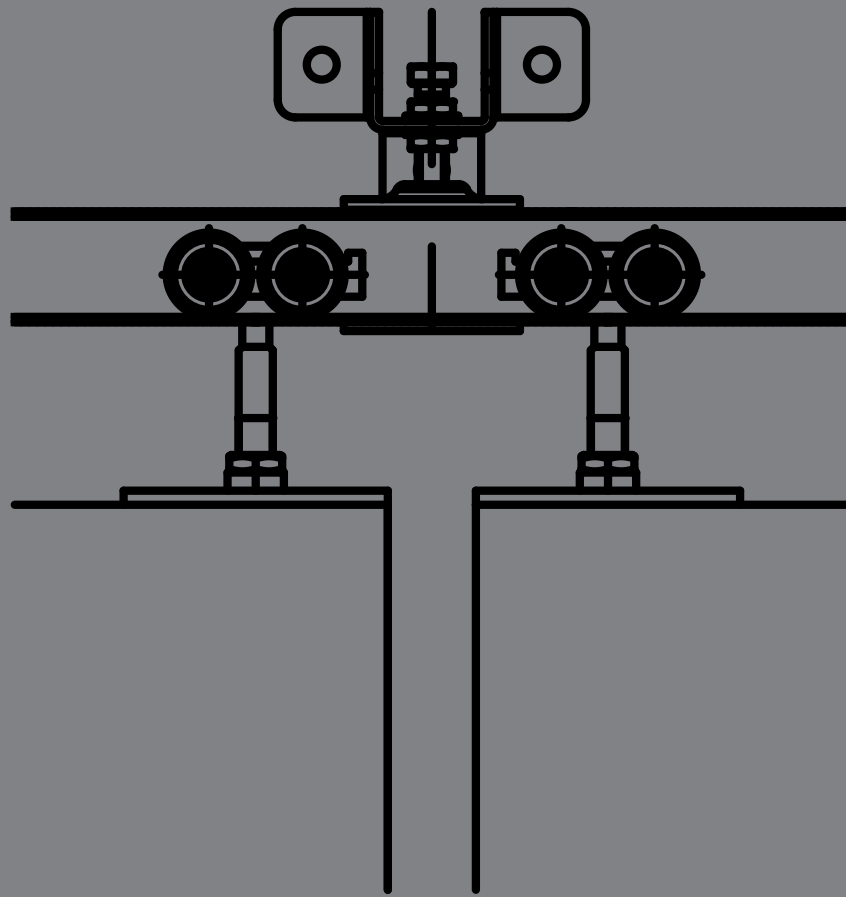
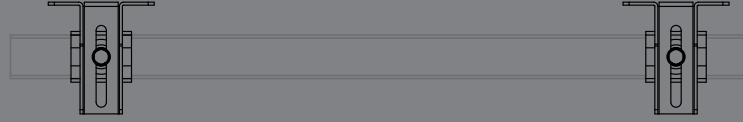


Technical details

OPTIMUM





1965-2020

Precisely 55 Years



It's now 55 years since founder, Vittorio Comunello, started on his pioneering adventure to build a company for the production of components for sliding gates. The company was an instant success and has maintained its reputation and market position based on innovative solutions and an unrivaled reputation for absolute quality.

55 years of precision in the manufacture of perfect components, maintaining pace with the evolution of the most advanced technologies while guaranteeing complete security and safety.

3 YEAR WARRANTY

Warranty is subject to Optimum being used within the guidelines for manual, motorised, door and gate. Poor installation, misuse or lack of proper maintenance will void warranty.

AUTOMATED DOORS & GATES

Optimum's carriers are suitable for automated gates and doors operated up to 25 cycles per day.



Optimum carriers are manufactured by Comunello in Italy and feature sealed steel roller bearings.



overview



Top Door Stop attaches inside the track.



Track guides provide options for various types of installations.



Door Catch is a versatile door-stop that can be mounted at any corner.

Suggested Catchers FAC357 range

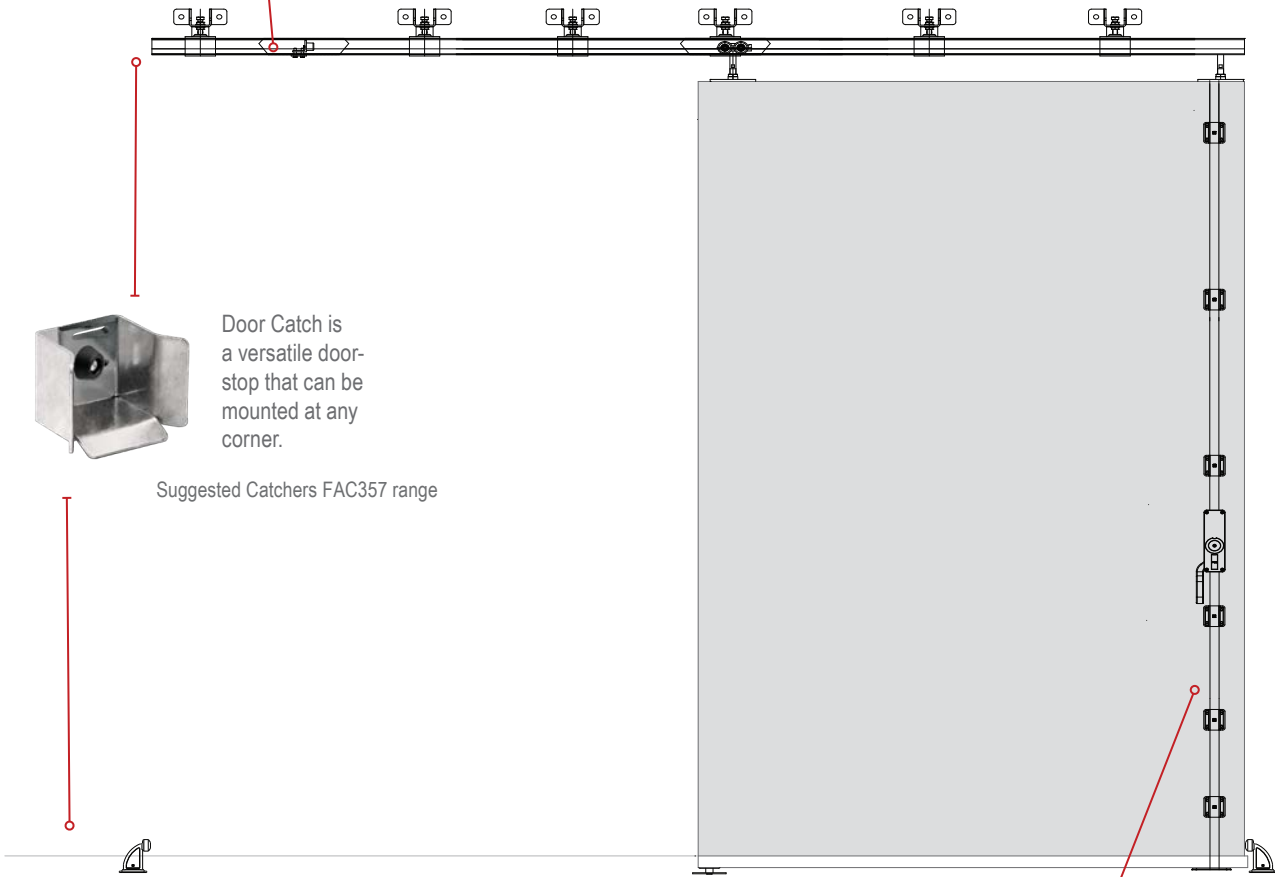
Suggested Stop FAC 115P



A Door Guide Roller can be bolted either side of the door. Or upside-down under the door running inside a recessed channel.



Lever Bolt door latch.

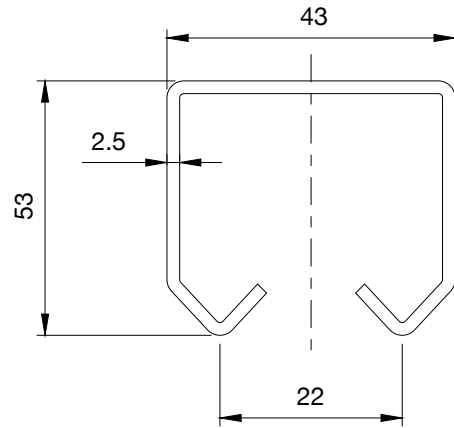


300 Series

DOOR TRACK

300-6000 6-metre length.

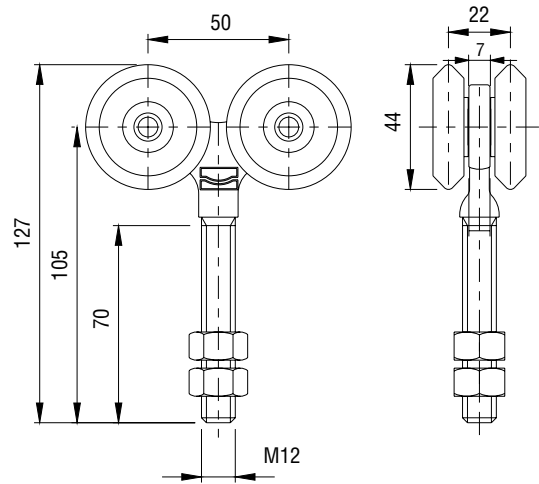
Custom length track available.
Minimum order quantities apply.



DOOR ROLLER

300-4CS Steel wheels
300-4CN Nylon wheels

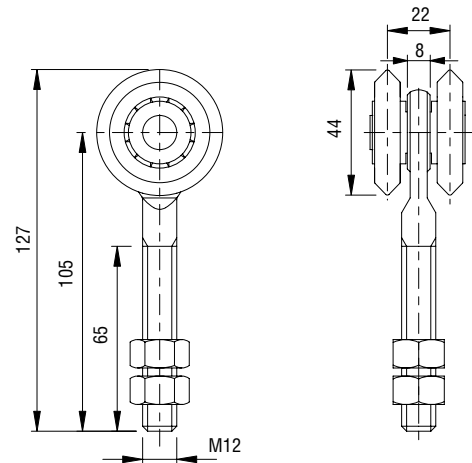
Four sealed steel roller bearings



DOOR ROLLER

300-2CS Steel wheels
300-2CN Nylon wheels

Two sealed steel roller bearings

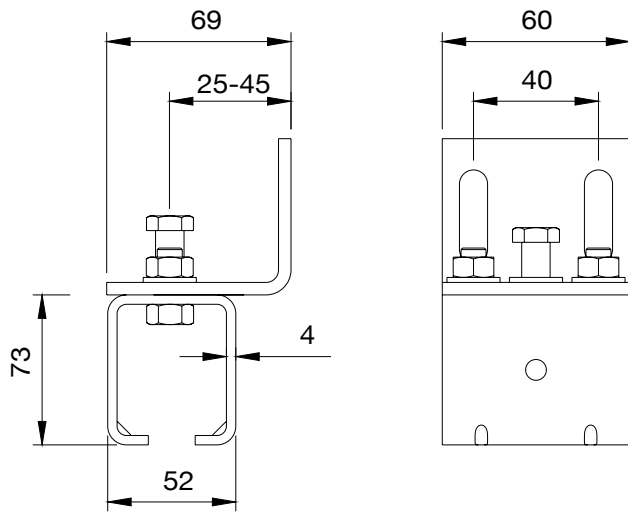


300 Series

TRACK MOUNT

300-2

Track mount only.
Bracket 300-1BS ordered separately.



OFFSET BRACKET

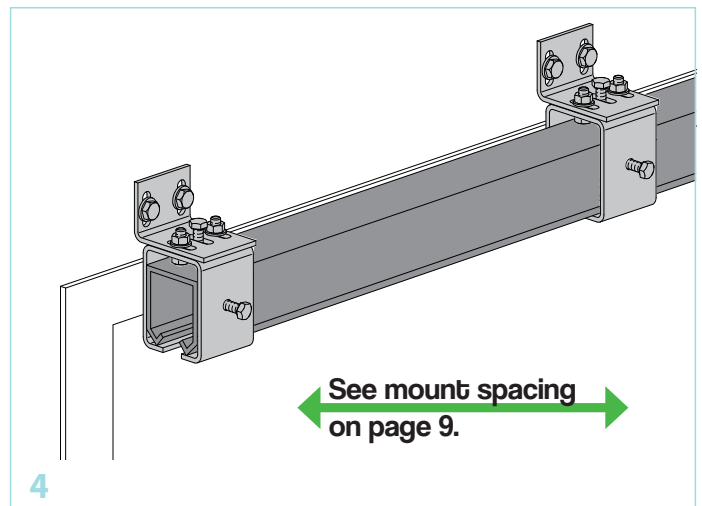
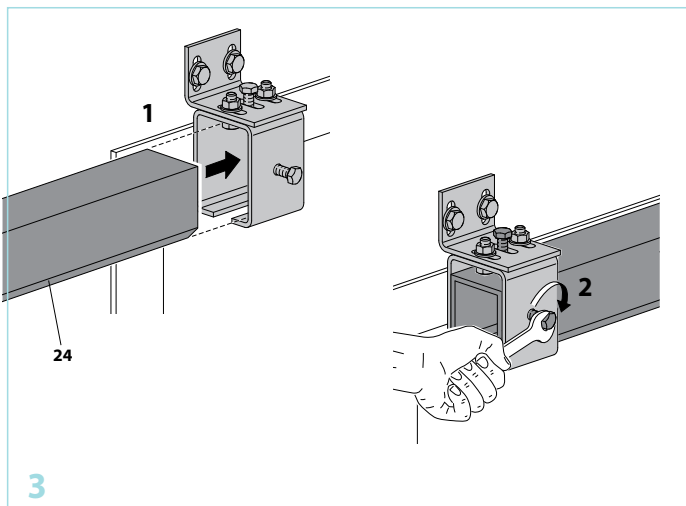
300-1BS



300-1BS Includes:
Nut & bolt (x2)
Track lock bolt (x1)



Image shown includes:
300-2 track mount
300-1BS bracket.



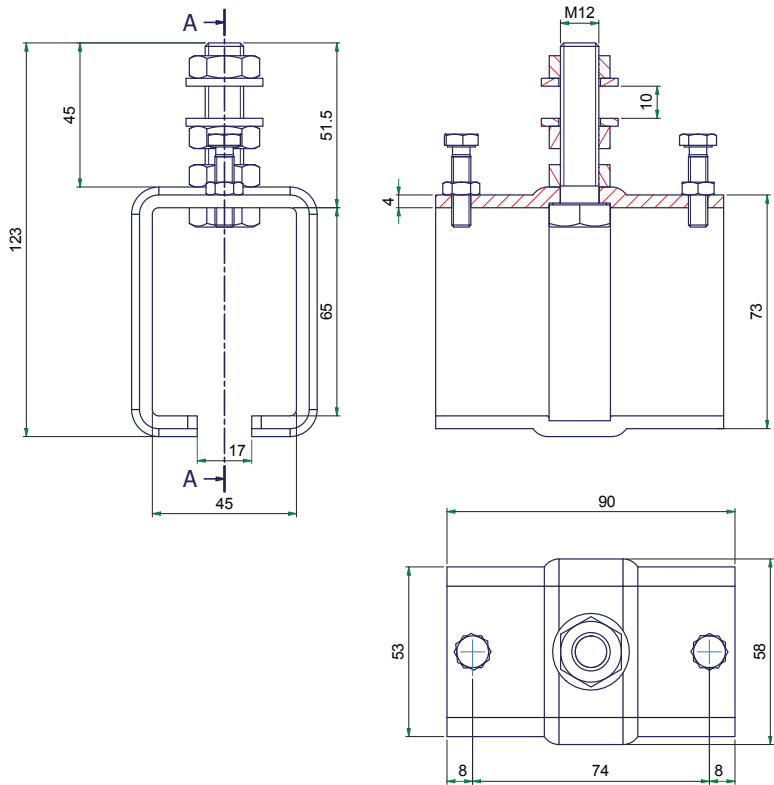
300 Series

ADJUSTABLE MOUNT

300-21

Includes height adjuster single mounting point for easier installation.

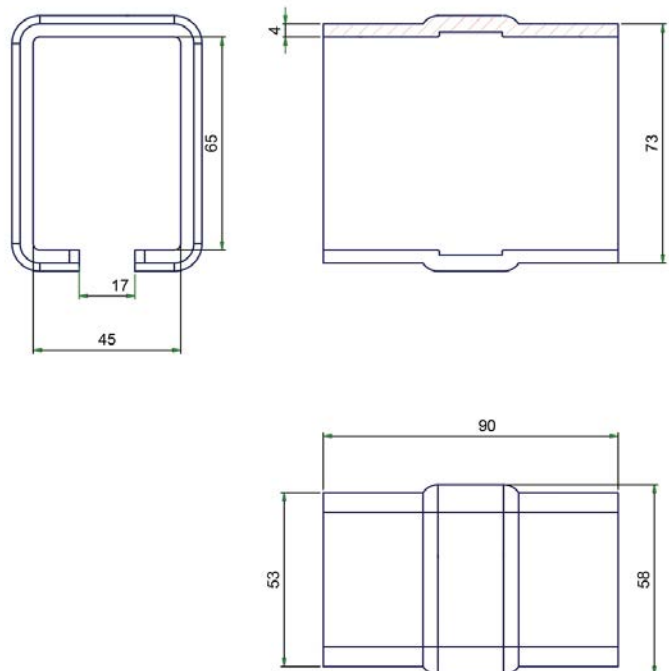
Can be used with single or side-by-side tracks and 300-D bracket.



WELD-ON MOUNT

300-21W Weld-on

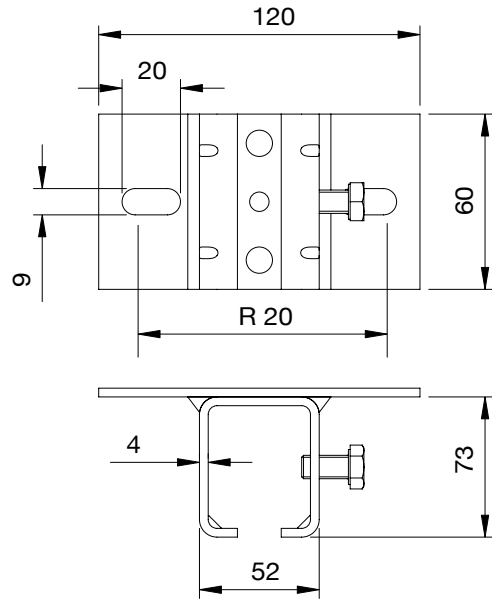
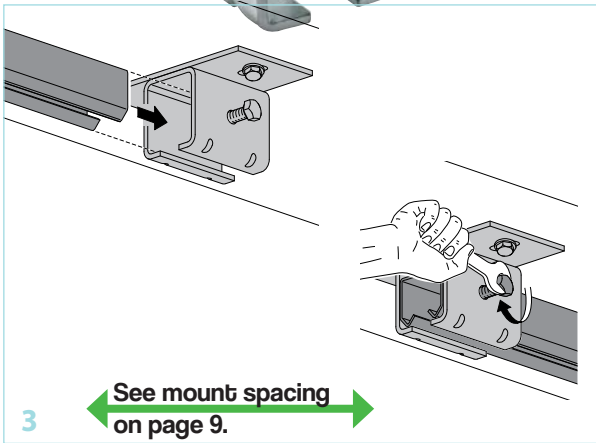
Can be used to mount single or side-by-side tracks.



300 Series

OVERHEAD MOUNT

300-22 Fixed track mount

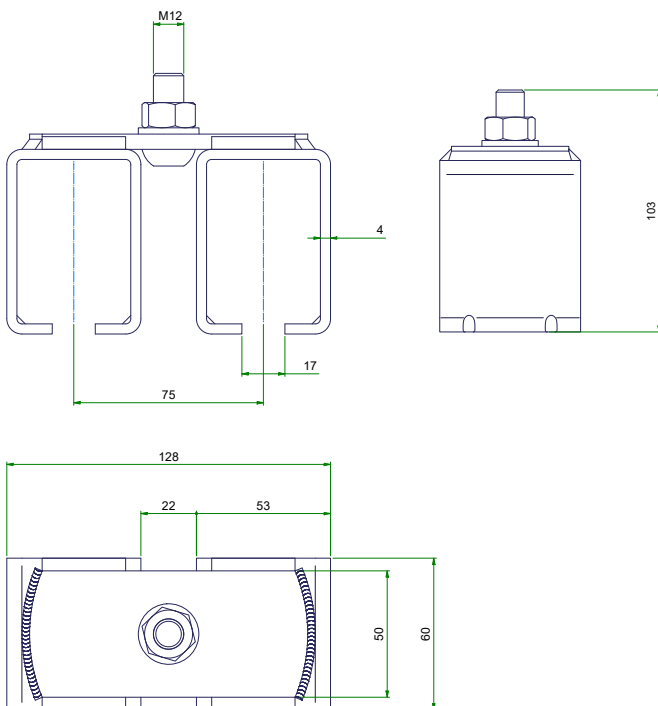


DOUBLE MOUNT

300-2D-75

Includes height adjuster single mounting point for easier installation.

Used with side-by-side tracks.
See mount spacing guide on page 9.

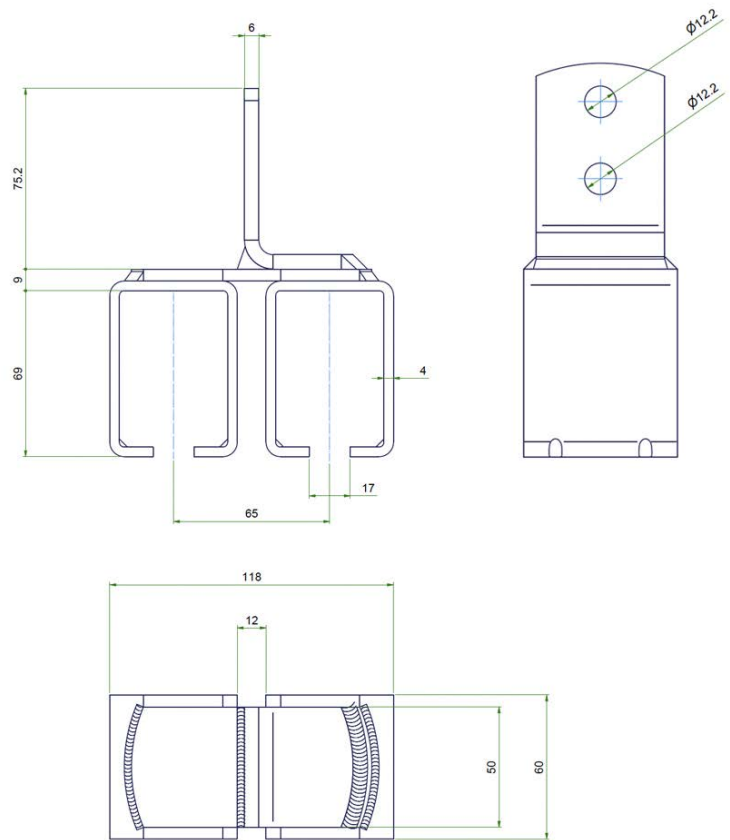


300 Series

DOUBLE MOUNT

300-2SSF-65

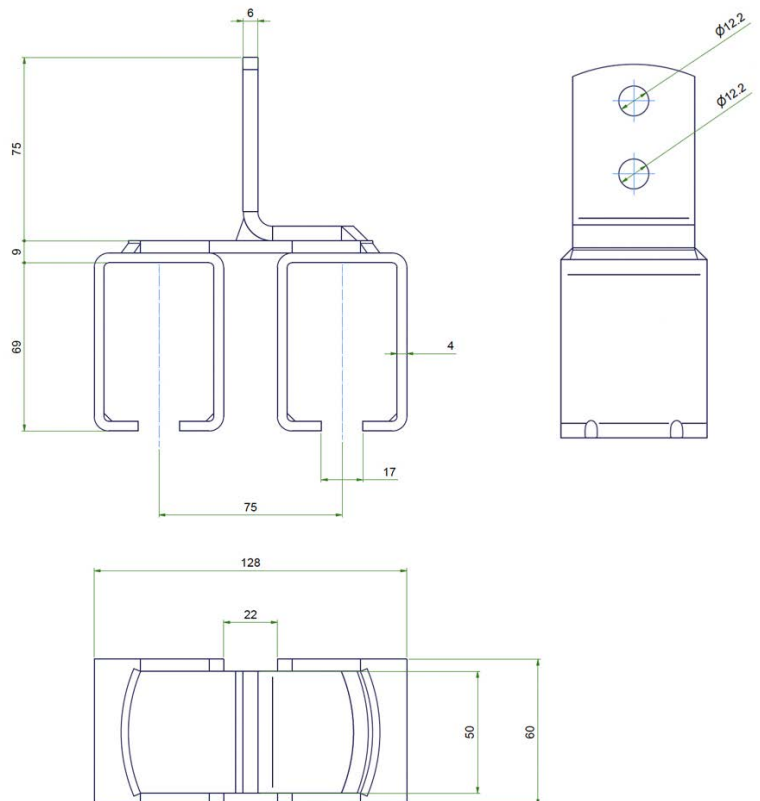
65mm space between track centres.



DOUBLE MOUNT

300-2SSF-75

75mm space between track centres.

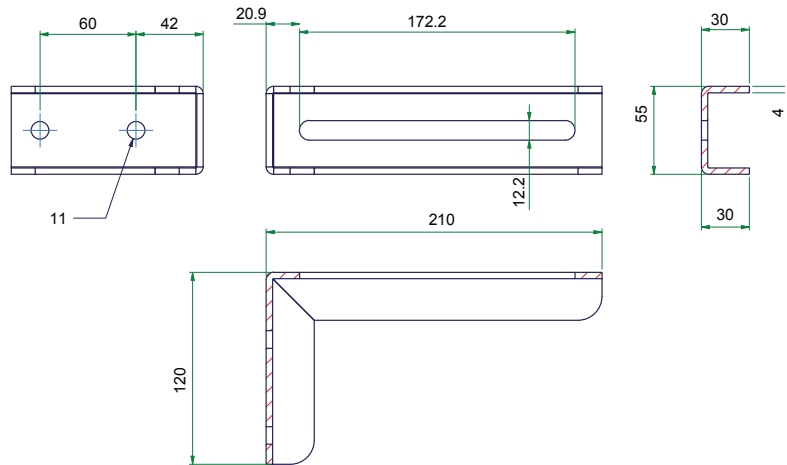


300 Series

DOUBLE BRACKET

300-D

Can be used when mounting single or two tracks side-by-side.



uses 30% less
mount brackets

300 SERIES

SINGLE TRACK MOUNT SPACING

Door weight	120kg	200kg	250kg	300kg
Mount spacing (mm)	1200	1100	1000	900

Spacing applies to all Optimum 300 mounts on a single track.

300 SERIES

DOUBLE TRACK MOUNT SPACING

Door weight	120kg	200kg	250kg	300kg
Mount spacing (mm)	1200	1100	1000	900

Spacing applies to all Optimum 300 mounts on a double track.

300 Series

2-POINT LATCH

300-LL Door opens right to left (see illustration below)

300-LR Door opens left to right-hand

Right and Left-hand models.

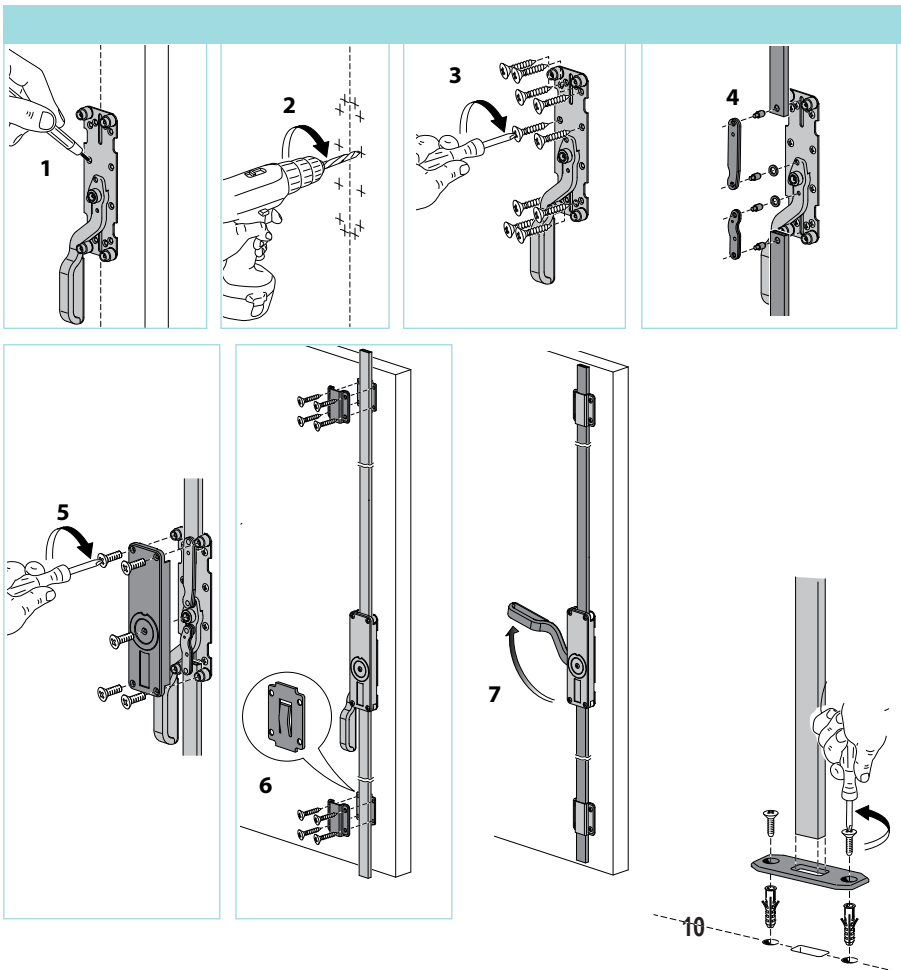
Kit includes:

Latch

6x Rod Guides

1x Strike Plate

Lever rods not included:
details on following page.

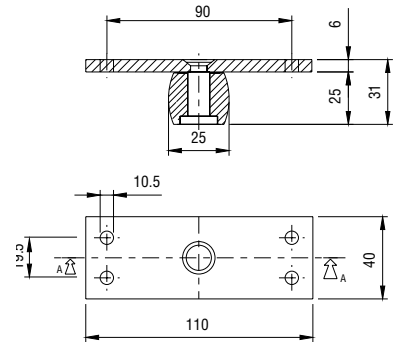
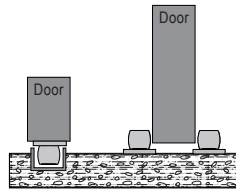


300 Series

DOOR GUIDE

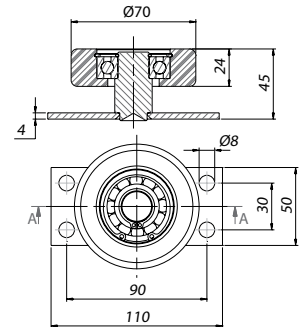
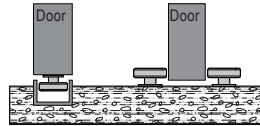
300-BG

Solid brass roller, used one of two ways.



DOOR GUIDE

248-60



TOP DOOR STOP

300-TS

Top Door Stop is mounted inside the track.

